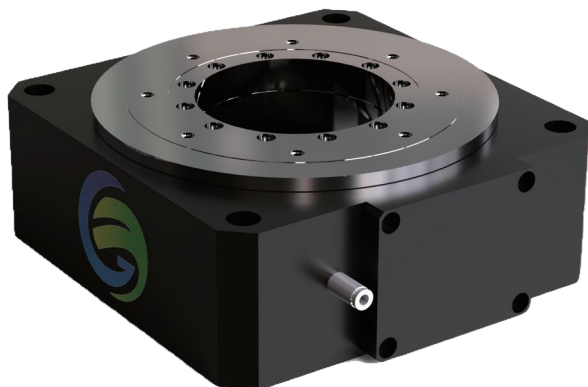


Air-Bearing Rotary Stage



Features

- High-load and precision air-bearing design
- High repeatability and positioning accuracy
- High level of machining technology
- Customized requirements accepted

Description

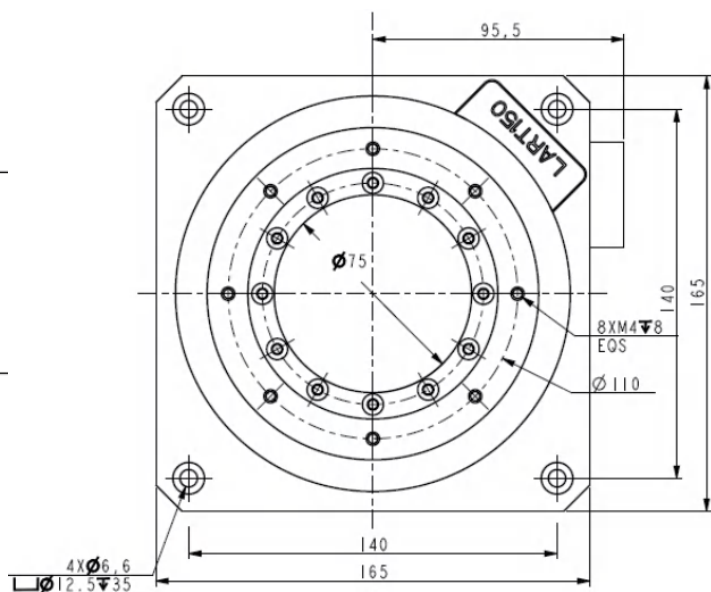
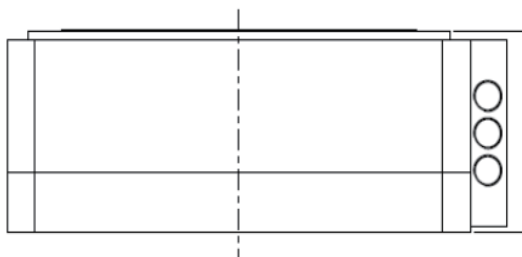
The compact design ensures that a large hollow ($\phi 75$) is realized within a very small height (65mm).

The stage provides ultra-smooth motion, angular second level accuracy and repeatability.

Applications

- Semiconductor equipment and laser field

Interface Definition



*Interface dimensions from LART150

Technical Specifications

LART150	
Tabletop diameter	150 mm
Height	65 mm
Hollow aperture	75 mm
Max. velocity	800 rpm
Peak torque	8 N·m
Continuous torque	2.6 N·m
Accuracy	±1.5 arcsec
Bidirectional repeatability	±1 arcsec
Max. load_Axial	80 Kg
Max. load_Radial	30 Kg
Axial error motion (Synchronous)	<100 nm
Radial error motion(Synchronous)	<200 nm
Tilt error motion (Synchronous)	<2.5 μrad (0.5 arcsec)
Operating pressure	0.5 Mpa
Air consumption	<25 L/min
Total mass	5 Kg
Adapted driver	DC48V Driver

*Rotation velocity 60rpm based on the standard GBT+17421.7-2016(ISO230-7-2006)and GB/T17421.22000 as well as the temperature (22°±0.5°C).